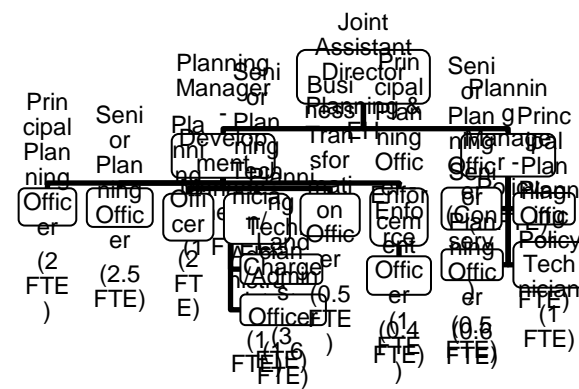


Planning & Land Charges - Proposed Structure

Appendix C



Notes

1. Additional Support - Specialist Planning Advice: Urban Design/Conservation/Trees/Valuations funded from reserve set up annually from fee income

2. Additional Support - Temporary Planning Officer/Technician, funded from additional fee income when required

3. Business Transformation Officer post is a shared role will work at BDC for 0.25 FTE

4. Planning Policy Manager is currently seconded to BDC for 0.4 FTE

5. Additional Support - Principal Planning Officer within the Policy Team, on the same basis as current (0.5 FTE temporary and additional casual officer) funded from the shortfall resulting from the secondment of the Planning Policy - Manager to BDC